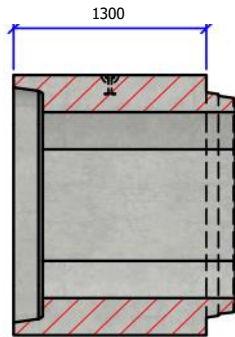
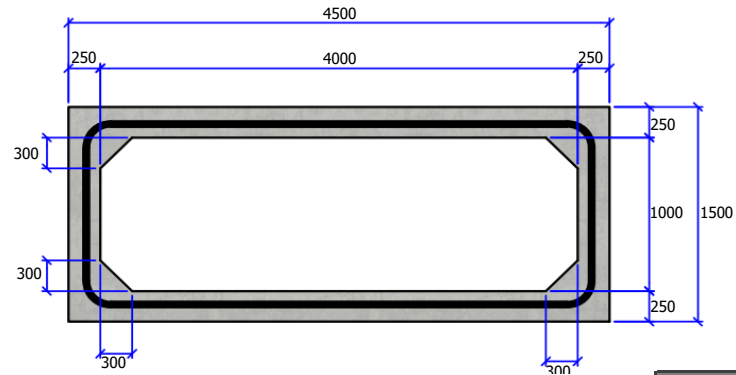


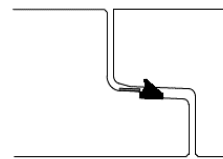
IDEAL KOKER MODULAIR 400x100 lengte 1,3m



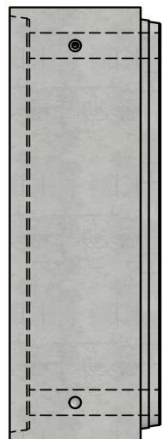
Langssnede



Vooraanzicht



Detail mof/spie



Bovenaanzicht



| | |
|---------------------------------------|--------------------------|
| Belastingsklasse: | C kN/m ² |
| Sectie stroomprofiel m ² : | 3,82 |
| Betonsterkteklasse: | C60/75 |
| Omgevingsklasse: | XF4-XC4-XD3-XA3 |
| Werkende lengte mm: | 1300 |
| Helling stroomprofiel: | N/A |
| Voegverbinding: | dichting CK89 |
| Hijsvoorziening: | 2 x kogelkopanker 7,5T |
| Plaatsingsvoorschrift: | volgens opgave producent |
| Normering: | conform EN14844 |
| Gewicht kg: | 9523 |

IDEAL

| | | |
|-----------|--------------------------|-----------------------|
| Project: | Kokers | |
| Art. nr.: | IDEAL-KM400100W25L1,3M-C | |
| Rev.nr.: | 0 | REV.Datum: 05/07/2022 |

